

# CERTIFICATE OF LOCATION OF GOVERNMENT CORNER

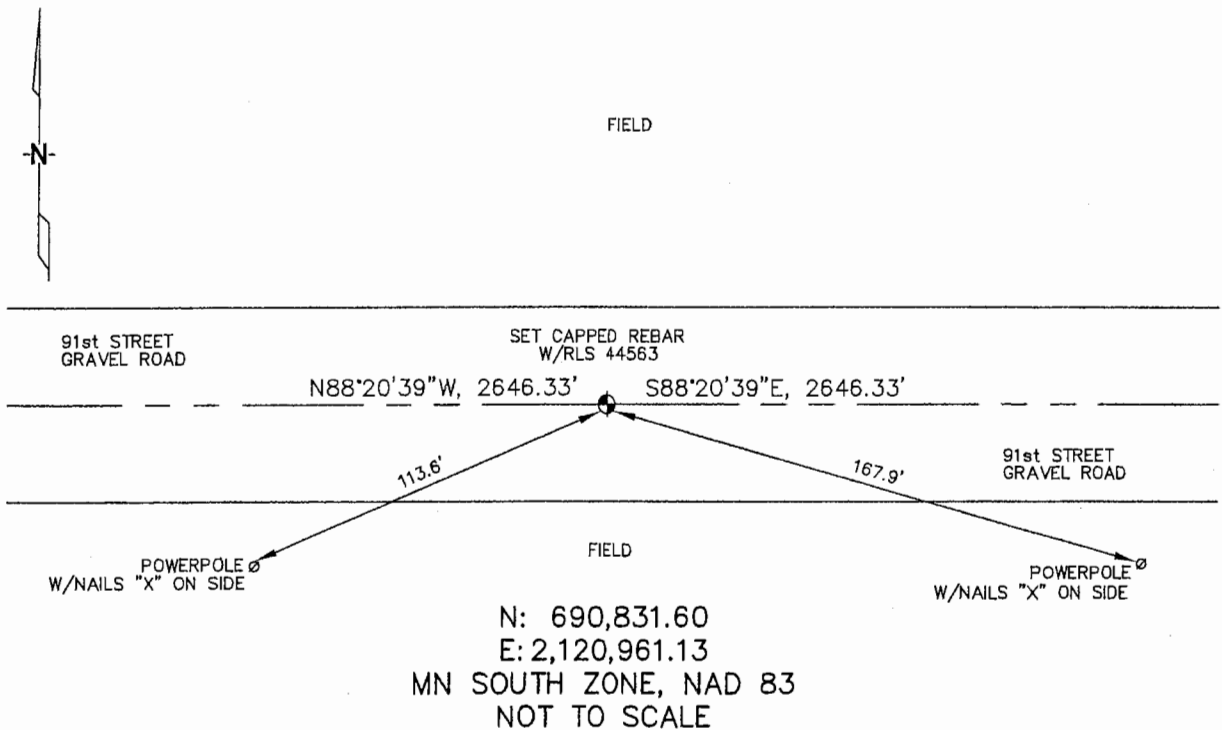
NORTH 1/4 Corner of Section 20, Township 106, Range 42, 5TH P.M.

STATE OF MINNESOTA, County of MURRAY

At the corner location shown on the sketch :

- On \_\_\_\_\_ found \_\_\_\_\_
- left monument as found,  lowered monument,  removed monument (explain)
- On 3/21/2006 set 5/8" REBAR WITH CAP: RLS 44563.

### Sketch of reference ties



Statement of evidence relative to this corner location is on back page

I hereby certify that this document and the data contained herein was prepared by me or under my direct supervision.

Thomas V. Zeff      5/26/06  
 Thomas V. Zeff      Date

Registration No. 44563

- Land Surveyor,  Professional Engineer
- County Surveyor,  County Engineer

### OFFICE OF THE COUNTY RECORDER

County of \_\_\_\_\_

**SEP 28 2006**

I hereby certify that this document was filed in the Co. Recorders office at \_\_\_\_\_ .M. on the day of \_\_\_\_\_ A.D., 20

County Recorder James V. Johnson  
 By \_\_\_\_\_, Deputy

DOCUMENT NO. \_\_\_\_\_

STATEMENT OF EVIDENCE:

NORTH 1/4 CORNER, SECTION 20, T. 106 N., R. 42 W.,  
MURRAY COUNTY, MINNESOTA

- 1866 J.W. Bishop, US. Deputy Surveyor, monumented corner.
- 11/10/1912 Murray Co., placed a gray boulder on corner. no ties.
- 2/21/2006 Ulteig Engineers, Inc., Survey Crew, Brain Payne Party Chief,  
found nothing. Set a 5/8" rebar with cap: RLS 44563.  
Ties: SE-167.9' to nailed "X" in power pole;  
SW-113.6' to nailed "X" in power pole;  
E-2646.33' to NE corner, Section 20;  
W-2646.33' to NW corner, Section 20.